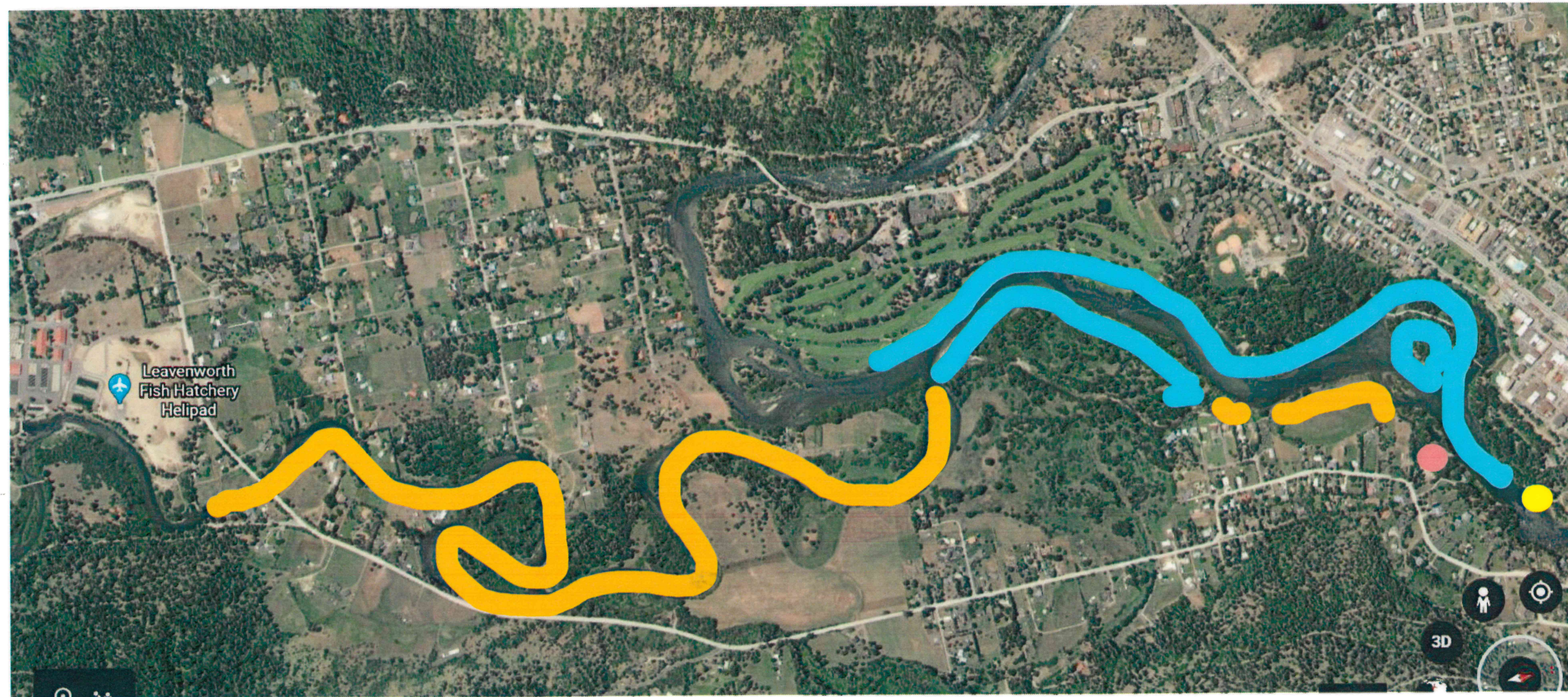


Icicle Creek is a small creek bordered by mostly private land (orange highlights). Please minimize noise levels and time spent on the shorelines of Icicle creek to minimize impacts to fish, wildlife, and neighbors

The Wenatchee river is a bigger river bordered mostly by public land (blue highlights). There are several public beaches to gather, celebrate, and hang out.



Know your take-out location and be lined up on the correct side of the river:

- River right - East Leavenworth Road Boat Launch
- River left - Above Barn Beach